

SHORT SKIP



Sonoma County Radio Amateurs, Inc.

AUGUST 1989

Club Station
W6LFJ

P.O. Box 116
Santa Rosa, CA 95402

Repeater Station
WB6PVS

VOL 14 # 8

IS CW USELESS?

From *Radio Communications*, journal of the Radio Society of Great Britain:

... Meanwhile, the age-old arguments about easing the entry into HF amateur radio by removing the obligatory (ITU Radio Regulations) Morse test continue on both sides of the Atlantic.

John Rabson G3PA draws attention to a remarkable example of an unexpected use of CW reported in the Belgian journal *CQ-QSO*, Dec. 1988. His translation is as follows:

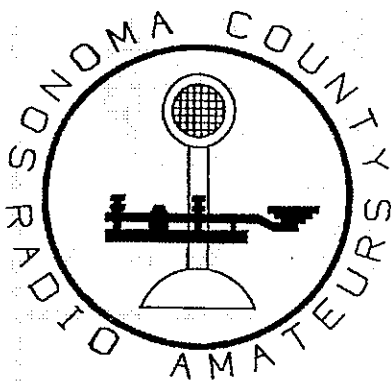
It's the end of March 1985. A Belgian family is involved in a road accident. The parents are badly injured, their son is in a coma. The doctors say there is no hope for him.

The parents refuse to give up hope. For two years they visit their son every day. One day, in desperation, the father, a radio amateur who, before the accident, was preparing his son for the Morse test, has the idea of sending CW by pressing on his son's arm. To his astonishment, the lad responds. The doctors say "you're imagining things"; they insist death will come within three weeks.

But three weeks later, their son is transferred to a university hospital. There, in front of an audience of doctors and nurses, he is able to send CQ quite clearly whenever asked ... gradually the coma becomes less deep.

Several months have passed. The boy is able to communicate by signs. He indicates that he is thirsty but doesn't want any of the offered drinks. He seizes his Morse key and sends 'grape juice'.

This is not a fairy story. The father is Jan ON1FV of Mafines. His son Willem has now left hospital; he can say several words and can even take a few steps.



OFFICERS FOR 1989

PRESIDENT:	Glen Crownover	N6DNB	546-8955
VICE PRESIDENT:	John Wallack	W6TLK	833-1873
SECRETARY:	Alan Bloom	N1AL	538-7115
TREASURER:	Jim Pelmulder	N6PTM	823-7947
MEMBERS-AT-LARGE:	Chuck Sabin	N6DDK	795-2371
	Bob Olsten	WD6DPE	546-5593
REPEATER CHAIR:	Jim Rutherford	WB6PER	526-2972

SHORT SKIP STAFF:

EDITOR:	Alan Bloom	N1AL (e)	538-7115
	1578 Los Alamos Rd, Santa Rosa, CA 95405	(d)	577-3981
CIRCULATION MGR:	Tracy Reese	WB6TMY	
SWAP SHOP:	Hank Davis	W6DTV	823-7885

ARRL LIASON: Alan Bloom N1AL 538-7115
 ASST. DIRECTOR: Chuck Sabin N6DDK 795-2371
 BADGE CHAIRMAN: Jim Pelmulder N6PTM 823-7947
 CLUB HISTORIAN: Connie Freitas N6FYV

ACTIVITIES COMMITTEE:

PUBLIC SERVICE: Bob Sones WB6EKV 546-3873
 PROGRAM CHAIR.: Bob Olsten WD6DPE 546-5593
 FLEA MARKET: Chod Harris WB2CHO 526-2198
 EDUCATION: Chr. Tracy WB6TMY 527-8124
 WA6ACX WW6D WA8LLY WB6PDP W6TLK WB6TMY KF6WV
 TVI/RFI CHR: John Lynch W6CCY 823-1357
 AWARDS CHR: Steve Lund WA8LLY 823-4544
 VEC EXAMS: Steve Lund WA8LLY 823-4544
 WA6ACX N1AL K6ANP AG6C WD6CKP WN6D WW6D
 W6DTV WW6F WB6FRZ KF6FX W6RIA WB6UDR WU6W
 REFRESHMENTS @ MEETINGS: Bob Olsten WD6DPE
 GREETER AT MEETINGS: Jane Vanderslice N6NTB
 MEMBERSHIP LOTTERY: Bob Scolnick K6GEV
 QSL MANAGER: Doug Bender WW6D

REPEATER CONTROL OP'S:

WD6CKP Hoppy 542-6750 N6ONZ Garry 584-3425
 WB6PER Jim 526-2972 W6TLK John 833-1873
 WB6UAZ Kathi 544-7943 WN6D Jim 544-7943
 PACKET COMMITTEE: Al Bloom N1AL, Jim Boyett
 WN6D, Rich Freitas KA6SSL

ARE YOU NOT AN SCRA MEMBER?

IF SO, then this is a complimentary copy. Our club is involved with almost every area of Amateur Radio: Repeaters (13/73), Field Day, license classes (Novice through Extra), volunteer exams, RACES, DX programs, packet (145.03), hidden xmtr hunts -- you name it.

We invite you to attend our next monthly meeting (see below) or check into the Tuesday night SCARS net on the 146.13/73 repeater at 7:00 PM. You will hear the latest Westlink Amateur Radio News broadcast, announcements of SCRA activities, and a Swap Shop. If you would like to join SCRA, please refer to the dues listed below. Hope to have an "eyeball" QSO with you at the next meeting! 73 ...

CLUB MEETINGS:

7:30 PM, 1st Wednesday each month at the EOC (Emergency Operations Center, see map below) All are welcome to attend.

NEXT MEETING: August 2, 1989

PROGRAM: Calif. Dept. of Forestry video on the devastating Yellowstone fires this year.

DUES: \$12 per year, plus a one-time \$4.00 initiation fee. Dues are pro-rated \$1/month for new members. With membership, comes an SCRA call/name badge. Family membership: \$18

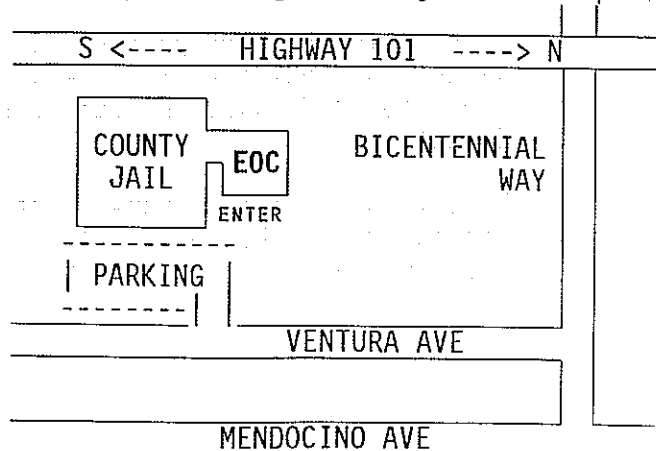
Radio Shack

STORE NO. 3855

ZANE BATES
MANAGER

510 FARMERS LANE
SANTA ROSA, CA. 95405

TELEPHONE
546-8423



FIELD DAY REPORT

Here's the breakdown of QSO's per band:

Band	Raw Count	With duplicate QSO's Removed	Points
80 CW	112	112	224
40 CW	164	162	324
20 CW	222	214	428
15 CW	180	180	360
TOTAL CW	678	668	1336
80 PHONE	35	35	35
20 PHONE	43	43	43
TOTAL PHONE	78	78	78

NOVICE:

80 CW	8	8	16
40 CW	17	17	34
15 CW	95	95	190
10 CW	1	1	1
TOTAL CW	121	121	242
10 PHONE	70	63	63
144 MHz PH.	18	18	18
220 MHz PH.	6	6	6
440 MHz PH.	4	4	4
TOTAL PHONE	98	91	91

GRAND TOTAL: QSO's: 958 POINTS: 1747

QSO points are multiplied by the power multiplier for a total of 3494 plus bonus points. If all our bonus points are allowed, the grand total will be 4294.

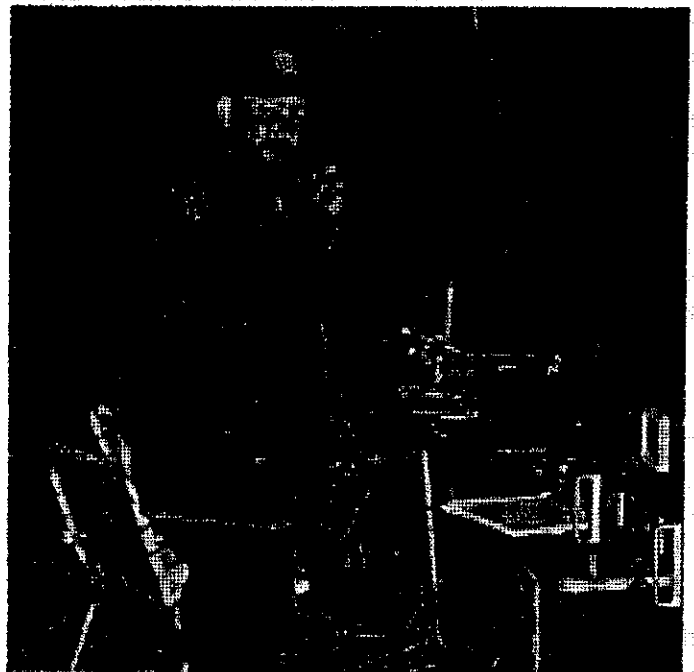
By comparison, REDX had 1193 CW QSO's and 878 on phone for 3264 QSO points times 2 equals 7338 plus bonus points. Looks like the plaque reverts to the "other guys" until next year.

We had a few problems with the paperwork. **DUPE SHEETS** are to be filled out in call sign suffix order. NIAL goes under "A", not "N". Several made this mistake. The 20 meter logs especially were very hard to figure out because different operators filled out the dupe sheets using different systems!

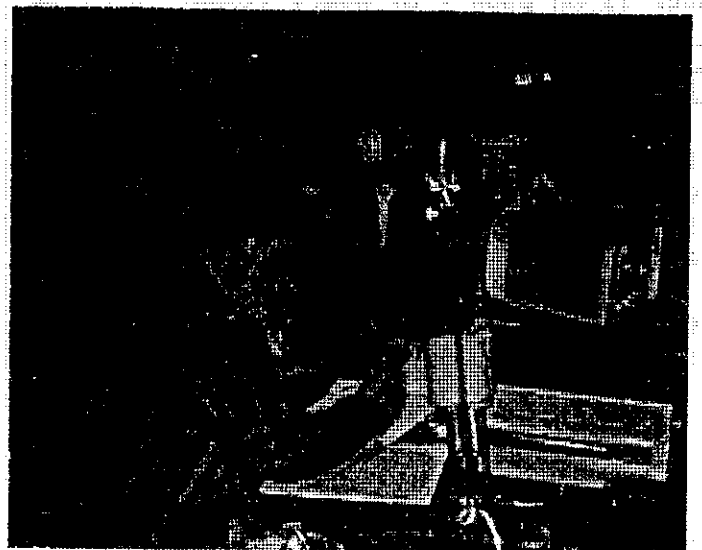
Another mistake was to put phone and CW contacts on the same dupe sheet. You're allowed to work the same station on both phone and CW, so there should be separate dupe sheets for each.

BONUS POINTS we earned were for 100% emergency power (500), location in public place (100), message handling (100), and natural power (100). Bonus points that we should have had but missed were Public relations (100), Information booth (100), Message to ARRL Section Manager (100), Receiving WIAW message (100), and Packet radio QSO (100).

Hopefully, next year we'll be better organized. We need to find a way to fit more operator-hours into the 24-hour period. Any volunteers for FD Chairman in 1990? ■



Garry N60NZ at the Novice phone station.



(L-R) Josh KB6MJJ and Tom KB6CYD logging for John WB6FRZ at 40 meter CW.

WHY IT'S IMPORTANT

by Ron Kane WA6TGF via LARK newsletter

Not too long ago, the local hams provided communications support for one of the many bike rides in the valley, the American Heart Association's Breathe Easy Classic. One of those helping to organize the event was Ulysses Falls, an avid bike rider and Lab employee. He was killed in a similar ride in St Louis during the past month.

We've been fortunate in that we've had very few incidents that try our abilities as communicators. Most of our reports have been for minor injuries although a major head injury did occur last year during the Hekaton on the Berkeley leg of the course.

Because of the number of Amateurs supporting these events, aid can be quickly summoned. Please remember that you have a capability that enhances the safety of the participants in these events. The hours of support may be long and boring, but at some time your presence may be critical for someone's survival. Be willing to help next time; it reduces everyone's load, and I hope the event support continues to be as boring as it should be. Thanks.

Ed. note: Upcoming Sonoma Co. public service events are listed in the "Events" column of *Short Skip*. Bob WB6EKV will be happy to sign you up if you would like to help. His number is on page 2 of every issue. ■

DO YOU HAVE 88.5?

As the North Bay fills up with people, it also fills up with radio signals and noise. This means we will have to be putting the repeater in P/L mode more and more often. You can't key up the repeater in this mode unless you have a subaudible tone encoder in your radio tuned to 88.5 Hz (code "YB").

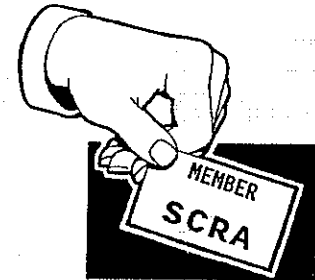
You need the P/L anyway if you want to use the autopatch, even for emergency calls. If you don't have at least one radio with P/L, you might consider adding an encoder. If you can't afford the \$30 or \$40 for a commercial device, there's a unit in August 73 you can build from Radio Shack parts for under \$7. ■

THE GREAT YELLOWSTONE FIRE OF 1989

Thanks to Kermit W6JFN, we will get a chance to see the excellent film on fighting the Yellowstone fire at the meeting Wednesday night. Sounds like a good one. ■

NEW AND RENEWED MEMBERS

SINCE LAST MONTH



Don Boosinger KD6HQ
1151 Pippin Circle
Santa Rosa, CA 95407
546-1217

Del Harris N6UWI
3468 San Sonita Dr.
Santa Rosa, CA 95403
545-8180

Terry Laduke WA6RNF
8686 Targee
Boise, ID 83709
208-378-0735

Larry Stewart N6UXI
PO Box 941
Santa Rosa, CA 95402
838-9689

We now have 172 members. ■

CHICO HAMFEST AUG. 13

GEARS is celebrating their 50th anniversary this year, and I understand the hamfest will do justice to the celebration. Hours are 8 AM to 4 PM at 1705 Manzanita Ave in the Elks' Lodge picnic area. Talk in is on 146.85. For more info write GEARS, POB 508, Chico, CA 95927. Tnx Bob N6QKZ ■

HSC

Halted

specialties co.

Electronics • Prototyping Supplies • Computers • Lasers

George Shedore
Manager
KS6W

6819 REDWOOD DRIVE
COTATI, CA 94931

PHONE: (707) 792-2277
FAX: (707) 792-0146

KPH — THE FIRST S. W. XMTR WAS A HAM SET

By Charles W. Park Aug 21, 1983

In January 1928, I was stationed at the RCA receiving station located at Marshall, CA. This station housed the marine operators and the overseas receivers (point-to-point).

One of the marine operators was Vergne Hoke 6HK, who now lives in Petaluma. Hoke and I decided to set up a ham transmitter, and with the blessing of the Engineer in charge, Irl Reid, we got permission to use the old Marconi powerhouse, located about a quarter mile down the hill. It had 120 volt power available and cables running between the two buildings. We used the same system to start and key the transmitter that KPH used on the Bolinas transmitters -- a simplex relay for start/stop and a polar relay for keying. We tuned up the transmitter to 40 meters and set up at the seldom-used KPH 1200 meter operating position.

Many of the ships had rigged up Short Wave transmitters and asked KPH to get on SW. Jocko Parachini asked us if he could use our ham set to work ships.

We ended up using the xmtr on 40 meters in the daytime to work hams, and shifting over to 43 meters at night for KPH to work ships. The operation was a success, and KPH ordered a SW xmtr to be installed at the Bolinas transmitting station.

In April, I transferred back to Bolinas and saw the installation of a Westinghouse 2KW 120 volt DC shortwave transmitter. The DC power was supplied by a motor-generator. KPH now has a better SW xmtr and antenna.

On May 24, we had a complete power shutdown for the Pacific Gas and Electric Company to work on the power lines. The only xmtr running was the KPH emergency transmitter which was powered by a gasoline-driven generator, and operated on 600 meters.

Since all the high-power SW xmtrs were shut down, I decided to do a little listening. I connected the local receiver to one of the antennas, and, in tuning around, ran into an

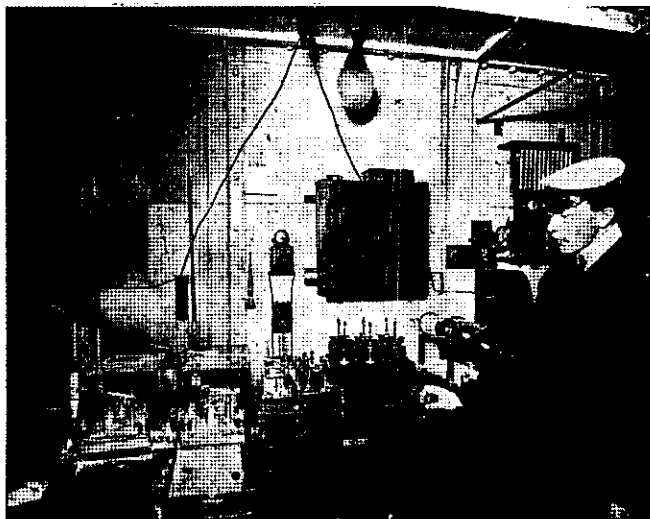
SOS on 36 meters. I contacted KPH on the sounder line, and he soon found the SOS. I went to the local storeroom and got enough #6 insulated wire to run from the station battery to the KPH SW xmtr. I soon got the xmtr going and tuned to 36 meters. Control was turned over to KPH. I don't believe contact was made, and got the impression that the person doing the SOS was not doing any listening.

The SOS came from an Italian airship named "Italia" located at the north pole. It was commanded by Umberto Nobile. Nobile was rescued by an airplane, but the entire crew was lost. The Nobile story was made into a movie in 1971 titled "The Red Tent" and was shown on TV Aug 20 and 21. ■

Charles Park (1905-1985):

BSEE Healds Engineering College, SF, 1927.
Amateur Radio 1 Mc to 60 Mc 1920-1935.
RCA communications 1927-1943. Pioneered trans-Pacific program and telephone service in 1930. Early use of facsimile, phase and freq modulation.
First-class telephone & telegraph licenses.
Univ. of Calif Lawrence Radiation Lab 1943.
Manhattan project 1943-1946, involving H.V. rectifier development for 1st A-bombs.
EE on Berkeley 184" cyclotron 1946-1969.
Many other projects developing equipment for physics & particle accelerators.

Tnx Connie N6FYV ■



1900 Typical shipboard installation.

SCRA MINUTES

July 5, 1989



The meeting was called to order by Vice President John Wallack W6TLK at 7:05 PM. Other officers present: Secretary Al Bloom N1AL, Treasurer Jim Pelmulder N6PTM, Member at Large Bob Olsten WD6DPE.

The VISITORS were introduced by Jane N6NTB: Barbara Grunfeltner and Della Harris.

The MINUTES were approved as published in *Short Skip*. m/s N6KMJ/KB6IOT

EDUCATION: John WB6FRZ is starting a code class for those wishing to upgrade.

The **TREASURER'S REPORT** shows \$1870.67 in the General Fund and \$1785.07 in the Repeater Fund. For N6KMJ's information, the \$1 repeater expense was for photocopying of autopatch codes. m/s N6KMJ/N6FYV

FIELD DAY: N1AL reports a low turnout this year due to 1) Lack of a FD Chairman, and 2) a conflict with a public service event on the same weekend. We apparently got beat, whomped and trampled upon by REDX this year.

The **FLEA MARKET** will be at the Fairgrounds again. N1AL has mailed notices to the ham magazines. We are considering a 10 meter SSB rig for the raffle prize.

EMERGENCY USE OF THE AUTOPATCH: N6PTM discussed the pro's and con's of using "9*1" mode on the autopatch vs having a base station call. The AP requires a subaudible tone encoder (P/L). As time goes on, we will need to put the repeater in P/L access mode more often during times of noise or unintentional QRM. Jim asked how many do not have P/L -- quite a few raised their hands. He received the same response to the same question at a recent CDF meeting.

Frank WA6PXW lost the membership lottery.

Adjourned at 8:09 PM. m/s N1AL/KB6IOT

Respectfully submitted, Sec. Al Bloom N1AL ■

TREASURER'S REPORT

FOR MONTH ENDING June 30, 1989



ACCOUNT	REVENUE	EXPENSE
Activities (Field Day)		200.00
Refreshments at meetings ..	4.90	6.00
Raffle at meetings	29.00	
Dues and Initiations	44.00	
Fund-Raisers (ARRL).....	25.00	27.25
Badges		22.26
World Radio		
Awards		
Misc		
Repeater Fund	223.64	102.64
Short Skip Newsletter	10.00	40.46
Training and Education		
Westlink Report		6.12
Membership Supplies.....	3.50	
Officers' Expenses		17.50
Insurance Fees		
	340.04	422.23
ASSETS:		
General Fund Account	1479.60	
Cash/checks on hand	391.07	
Total General Fund	1870.67	
Total Repeater Fund	1785.07	



COMING EVENTS:

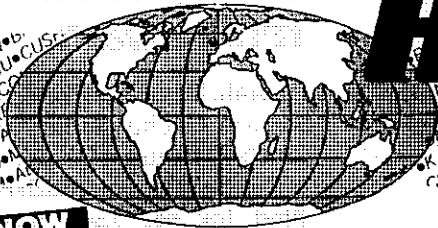
SCARS NET: 146.73 MHz
Tuesdays at 7 PM.

VE EXAMS HOTLINE NR:
408-984-8353

AUGUST:

- 7 - RACES etc. Net 7:30 PM
- 2 - SCRA meeting 7/7:30 PM
- 5-6 - ARRL UHF Contest
- 5-6 - 10-10 10M Contest, Phone
- 12 - Foothill College Flea Market
- 13 - Chico Hamfest
- 12 - Stride for Life Run, Petaluma
- 21 - RACES etc. Net 7:30 PM
- 17 - CDF/VIP Meeting 7:30 PM
- 27 - Bodega Bay to Breakers 5 mile race

WORLDWIDE DISTRIBUTION



HAM RADIO OUTLET

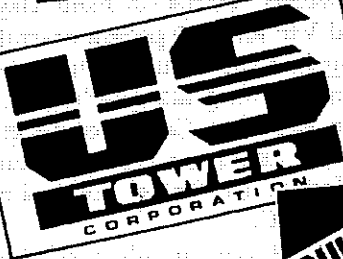
LARGEST HAM OUTLET IN THE WORLD

For A HRO 72 Page
Communication Equipment Catalog
Send \$1.00 to any HRO Store

NOW

9

STORE BUYING POWER



KENWOOD



ALL MAJOR BRAND
ACCESSORIES

ICOM

BULLETIN
ege has joined the
**HAM RADIO OUTLET
NATIONWIDE TEAM**

NOW LOCATED IN
SALEM, NH
WOODBIDGE, VA

THIS GIVES YOU EVEN
BETTER RESPONSE WITH
LOW-LOW OUTLET PRICES
& RAPID DELIVERIES
COAST TO COAST.

...America's Best!
TEN-TEC

GEOCHRON
GLOBAL
TIME
INDICATOR

Crushcraft
CORPORATION
Advanced
Electronic
Applications



YAESU



All Major Brands in Stock Now!



Bob Ferrero W6RJ
President/Owner
Jim Rafferty N6RJ
VP-National
Sales Manager

BURLINGAME, CA 94010
999 Howard Ave., (415) 342-5757
George, Mgr. WB6DSV
5 miles south on 101 from SFO

OAKLAND, CA 94606
2210 Livingston St., (415) 534-5757
Rich, Mgr. W6WYB
IS-880 at 23rd Ave. Ramp

ANAHEIM, CA
(714) 763-3033, (213) 860-2040
ATLANTA, GA
(404) 263-0700
PHOENIX, AZ
(602) 242-3515
SALEM, NH
1-800-444-0047

SAN DIEGO, CA
(619) 560-4900
WOODBIDGE, VA
1-800-444-4799
VAN NUYS, CA
(818) 988-2212

FREE SHIPMENT
Most items over \$100
UPS surface
STORE HOURS 10 AM-5:30 PM
CLOSED SUNDAYS

CALL TOLL FREE

IN CALIFORNIA CALL STORE NEAREST YOU

MID-WEST/WEST
ANAHEIM, 9 to 5:30 PST

1-800-854-6046

SOUTHEAST
ATLANTA, 9 to 5:30 EST

1-800-444-7927

MID-ATLANTIC
WOODBIDGE, 9 to 5:30 EST

1-800-444-4799

NEW ENGLAND
SALEM, 9 to 5:30 EST

1-800-444-0047



Toll free including Hawaii. Phone Hrs: 7:00 am to 5:30 p.m. Pacific Time, California, Arizona and Georgia customers call or visit nearest store. California, Arizona, Georgia and Virginia residents please add sales tax. Prices, specifications, descriptions subject to change without notice.



HANK'S SWAP SHOP

Hank Davis, W6DTV 7822 Washington Avenue
Phone 823-7885 Sebastopol, CA 95472
(Noncommercial ham ads are printed for free)

TRI-EX HS471 71 ft guyed crank-up tower. 16 sq ft wind area rest. @ 80 mph. \$500. Chuck N6OJ 763-2528.

NATIONAL NC173 rcvr \$40. NC183D \$100. NC120 \$25. HEATH HW7 w/pwr supply \$50. John W6CCY 823-1357.

MICRONTA 25-range, 20KOhms/V multimeter \$15. ARCHER dynamic earphones, 16 Ohms \$10. LAFAYETTE TE-23 Sine/square wave generator, 5Hz-1MHz \$20. REALISTIC MINIMUS 3" spkr in wooden enclosure, 8 Ohm \$5. K6ZUR 546-7326.

HYGAIN IO3BAS 3-e1 10 Mtr beam. \$50. John W6TLK 833-1873.

Free: Mini-quad beam for parts. Glenn 578-7432.
News travels slowly in Sebastopol. (Tnx WA8LLY)

Davis nets ham radio award

Sarah Davis was selected the Sonoma County Radio Amateur Club's "Member of the Year."

The Sebastopol resident was cited for her good operating practices, participation in club activities and her achievements.

Davis is a member of "Low Powered" Hams on Field Day, and VIP and F10 programs, putting in many hours behind the scenes during last year's fires. She is a Red Cross volunteer, and is active on H.F., earning "Worked All States" and going for DXCC.

An active member of the SCRA club, Davis also found the time to participate in the March of Dimes, Diabetes run, Snoopy's Young at Heart run, Save the Whales run, and Harvest Century Bike Tour.

Sonoma County Radio Amateurs, Inc.
PO Box 116
Santa Rosa, CA 95402

BULK RATE
U.S. POSTAGE PAID
SANTA ROSA, CA
PERMIT NO. 658

ADDRESS CORRECTION REQUESTED

JOHN BRECKENRIDGE
WB6FRZ
574 WILD OAK DR
WINDSOR CA 95492