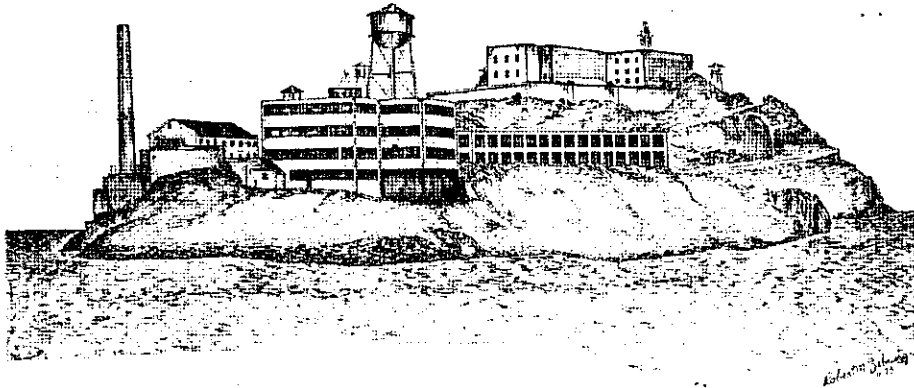


VOL. #5 Issue 1 JANUARY 1980

## ALCATRAZ INVASION



It was approximately 0700 hours 1 Dec 79 when the first of two invasion teams met at a small slip in San Rafael. Heavy equipment was loaded aboard the 21' invasion ship owned and operated by Bob Whitmire. The WX was heavy, heavy fog and would certainly make navigation difficult, but would conceal the team as they approached the island, Generators, fuel, antennae, food, transceivers, and assorted equipment were loaded with precision. Three members of the invasion team, ship captain and first mate set sail at 0735 hours. The heavy shroud of fog made visual navigation impossible. Fortunately the ship was equipped with radar and the team was able to navigate the narrow channel and make it into the open bay. Once into the bay the fog lifted somewhat but the radar was needed to locate the small 12 acre island nestled in the middle of the bay. Approach to the island was made from the north side. The small ship slid into the island slip and the team began unloading. Again the precision team work was evident as the approach and almost all of the unloading was completed before the team was caught by an island guard. Quickly the team leader produced the necessary bribe (permit) and the guard went on his way. The ship set sail again this time bound for Sausalito to pick up the remaining 8 members of the team and more equipment. Back on the island the first team began moving equipment up and over "Cardiac Ridge" to the north west corner of the island. Within the confine of an abandoned warehouse the operation was to take place. The team moved rapidly but after three trips and only a third of the equipment moved it was obvious the strain was becoming too much and they would have to wait the arrival of the others. Additional complications began setting in as the first boat of 155 island tourists began to arrive. The first team tried to blend with this group so as not to be obvious. Fortunately the operation was going to take place out of sight of these new arrivals. At approximately 1025 hours the second team arrived and the last of the equipment was unloaded. The problem still existed on how to move the remaining equipment over "Cardiac Ridge". Thanks to the careful negotiation of one of the second team members we were able to commandeer a vehicle to move the equipment. Once in place everyone began immediately setting up the various

CLUB OFFICERS

President: Don Bremer, KB6LO  
546-7047

Vice President: Jim Tomer, W6CYM  
838-9464

Secty-Tres: Jeannie French, WB6RPQ  
829-2069

Board Members: Len Geraldi, K6ANP  
795-4335

George Shedore, N6AUP  
528-0201

Ron Pipes, WB6NBR  
545-3813

Short Skip Staff: Lyle Meek, N6BLN  
829-2032

Hank Davis, W6DTV  
823-7885

Pam Meek - Typist

Club Call: W6LFJ


Club Meeting: First Wednesday of each  
month, 8 P.M. Red Cross  
Building

DUES

1980 Dues are now due. Please mail to  
Club Secretary. PO Box 116, Santa Rosa,  
CA

NOTICE - RTTY NET

RTTY NETWORK, MONDAY'S AT 8 P.M.  
146,595 MC SIMPLEX, 170 SHIFT  
60 WPM - ALL WELCOME

 **PARK - GAP** DON KB6LO

There is no doubt about it, 1980 will be one of the best years in the Club history. Officer's meetings have been filled with excitement and ideas. Volunteers have come from all corners and that is the real secret of success. We expect to reach the 100 member mark this year. The way things are going, that should be an easy goal to attain.

If you are not one of the active members, you will surely be missing most of the fun. Most of the members have indicated a desire to be progressive and that is the way we will try to operate. If you like to sit and watch, we may just accidentally pass you by on our way.

We have many activities planned that should be of interest at one time or another to every member. If you don't find something of interest, please let us know so we can do something about it.

Come on in and join to help make our club NUMBER ONE in the entire Pacific Division.

WE CAN DO IT!!!!!!



FCC - HOT LINE

Last Minute Update On FCC actions 4 Dec meeting -

Approved petitions RM 2490 and 2666 request to allow use of photocopy of license in lieu of original for proof of amateur operator qualification.

SATELLITE

Recently KB6LO was tuning up to do some OSCAR work. He heard OSCAR 7, sent a CQ and worked KH6BK in Hawaii. 30 minutes later on OSCAR 8 he worked KH6BK again.

## ALCATRAZ

communication sites and equipment. Time was of the essence as the operation was scheduled to begin at 2000 UTC. Verticals, dipoles and beams were erected at various points around the warehouse. Card tables were set up in several abandoned rooms and the transceivers were placed on them. Generators and power cords were put in place and checked out. Sleeping quarters were tentatively set and the dining hall established. At approximately 1955 UTC 1 Dec 79 the team met for a final briefing. At 2000 UTC 1 Dec 79 the mission was launched with these fateful words -- CQ CQ from Alcatraz Island - W6LFJ. What was to become a continuous barrage had begun. For the next 24 hours amateur radio operators from the Sonoma County Radio Amateur Club would attempt to work as many fellow "hams" as they could from the middle of San Francisco bay. The site was Alcatraz Island, home of the former Federal Prison.

Equipment was set up to operate on 2 meters SSB, 10 meters, 15 meters, 20 meters, 40 meters, novice 40 and 15 meters CW. Immediately it was obvious the team was to be struck by "Murphy's Law" (if anything can go wrong it will). The novice rig could not be properly tuned and therefore was not operable. The novice would be scheduled to operate later. The 15 meter SSB station was plagued by antennae problems and inter-mod with the CW station. The 20 meter SSB had no audio on the transceiver and had to shut down. The 15 meter SSB station was placed on 20 SSB. Things finally settled down to a steady rhythm. Murphy was to strike at least once more. The main course for the evening meal was a large pot of carefully prepared beans. During the excitement of setting up, the pot of beans which had been placed on the stove to thaw out, was forgotten and when it was remembered, you guessed it -- the beans were burned. However, with ocean breezes and fog to stimulate the appetite, when dinner time rolled around, not a single bean was left.

Although the plans had been formulated 4 months in advance and permits requested it was not given formal approval until 2 weeks before the date of scheduled operation. As a result of the delay everyone had assumed it would not materialize and advanced announcements to the various Ham magazines were not made. Consequently not as many amateurs were contacted as had been hoped for. HOWEVER, the team was able to work 1,050 QSO. 10 countries and 36 states. A nice certificate to confirm contact with the Alcatraz teams has been prepared and will be mailed out in early January.

Members of the Alcatraz Invasion Team were N6BLN Lyle, KB6LO Don, N6OJ Chuck, W6RIA Wayne, K6ANP Len, WB6NBR Ron, WD6AJR David, KA6AQS Mike, KA6GDB Alan, N6AUP George and Georges son.

Murphy struck his final blow in that the address in the Callbook for W6LFJ is incorrect and the Post Office is returning all correspondence sent to that address. If you worked Alcatraz Island and got your QSL card returned, send your S.A.S.E. to P. O. Box 116, Santa Rosa, CA 95402.

As a final note, W6LFJ will invade Death Valley on Feb. 16-17, 1980 and will operate on the low end of the general class bands from the 282 ft. (lowest point in the U.S.) level. A special certificate will be offered for contact with the Death Valley team.

## SPECIAL THANKS

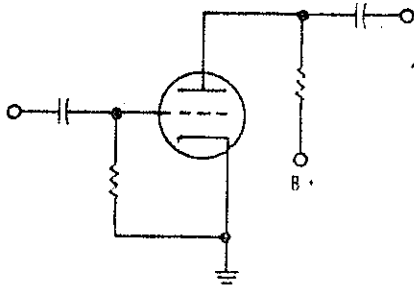
Members of the Alcatraz expedition wish to thank the following members for their assistance and contributions - WB6SMY Lyman, generator; WB6FEQ John, HF/VHF rigs; K6EDU Pete, antennae; W6DTV Hank, beans (the ones burnt by N6BLN); and WA7WIW Bob for the dozens of cookies.

APOLOGIES -- YOUR SHORT SKIP STAFF WAS OPERATING UNDER THE ASSUMPTION THAT THE JANUARY MEETING WAS TO BE HELD JAN 9. THEREFORE THE PAPER PRINTING SCHEDULE WAS SET ACCORDINGLY. SORRY WE WERE LATE,

# A REFRESHER

What kind of circuit is shown below?

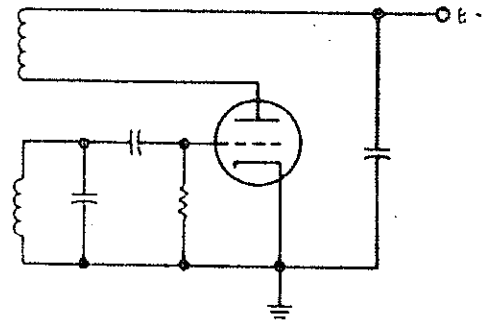
1



- A. A low-pass filter.
- B. A basic amplifier circuit.
- C. A basic oscillator circuit.
- D. A full-wave rectifier circuit.
- E. A half-wave rectifier.

What kind of circuit is shown below?

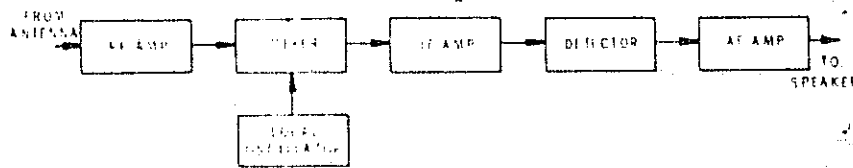
2



- A. A basic oscilloscope circuit.
- B. A basic amplifier circuit.
- C. A basic oscillator circuit.
- D. A basic amplitude circuit.
- E. None of the above.

What does the following block diagram represent?

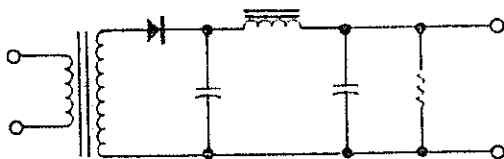
3



- A. A simple amplifier.
- B. A simple receiver.
- C. A simple transmitter.
- D. A high-pass filter.
- E. A simple oscillator.

What kind of circuit is shown below?

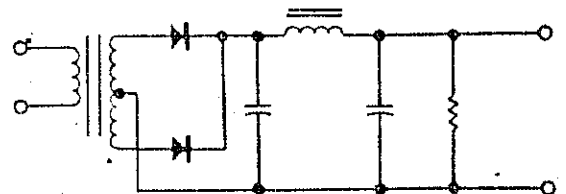
4



- A. A half-wave receiver circuit.
- B. A full-wave rectifier circuit.
- C. A key-click filter.
- D. A basic receiver circuit.
- E. A half-wave rectifier circuit.

What kind of circuit is shown below?

5



- A. A half-wave rectifier circuit.
- B. A full-wave rectifier circuit.
- C. A key-click filter.
- D. A full-wave receiver circuit.
- E. An oscillator circuit.

# SWAP SHOP

- BEST OFFER: STD RTTY Desk-MOD 19-or 14 - See WB6NBR
- FOR SALE: Inverted Vee Antenna with Hygain Traps 40-80 meters. \$25.00 See WB6NBR
- WANTED: Vacuum tube Voltmeter, used...Call Bob Estes, K5CH at 528-7500
- FOR SALE: Hammarlund HQ 129...asking \$40.00-Call Jim W6CYM at 838-9464
- FOR SALE: Audio Oscillator 20-200,000hz TS382F/U \$30.00. Sine sq Wave generator 20-20,000 hz (Heath) \$15.00. Heath HX-20 w/p supply \$75.00. Heath Comanche receiver MR-1 \$75.00. Heath Mohawk RX-1 receiver \$75.00. See Hoppy, K6MUP.
- FOR SALE: Heath Kit Apache TX-1 Transmitter with SB 101 SSB adaptor. See Steve Shafer, KA6EFK.
- FOR SALE: Love Seat (not needed any longer) white naugahyde 3 yrs. old \$100. Also have matching chair. Call W6FPL. Seymour Malmuth at Sonoma.
- FOR SALE: Tons of military surplus for conversion, parts, etc., tubes, coils transformers, dozens of microphones (some are brand new). Also have two commercial grade VHF corner reflector antennas. Usable for Two Meters. KB6LO Don at 546-7047.
- WANTED: Crystals for Motorola 60 watt base stations to be used on Two meters. Also old keys, mikes, etc. KB6LO
- FOR SALE: New Six Meter FM Comtronix. Special price, one time only. Also see Don, KB6LO.
- WANTED: Your used equipment for listing in this column. For listings call Hank Davis, W6DTV.

---

////

## Short Skip Net

THE SHORT SKIP STAFF WILL CONDUCT A NET EACH SUNDAY 28,750-0330 UTC. IT IS INFORMAL AND THERE IS NO ROLL CALL. DURING THE 15-30 MINUTE SESSION WE WILL ATTEMPT TO PICK UP THOSE NEWS TYPE ITEMS ABOUT THE "HAM" ACTIVITIES OF OUR CLUB MEMBERS. IF YOU HAVE SOMETHING TO SELL OR SWAP - CHECK IN. IF YOU HAVE GOTTEN A NEW RIG OR HAVE UP GRADED YOUR LICENSE - CHECK IN. IF YOU HAVE WORKED OR CONFIRMED SOME INTERESTING DX - CHECK IN. IF YOU HAVE HANDLED TRAFFIC OR PHONE PATCHES DURING THE WEEK - CHECK IN. NOVICE AND TECHNICIAN MEMBERS ARE ENCOURAGED TO MONITOR AND TO CALL 829-2032 IF YOU HAVE SOMETHING TO PUT ON THE AIR.

QRZ - QRZ

You say you've worked him a dozen times but do you know him? You say you've talked with her every day on 2 meters, but do you know her?

During the 1980 year the Short Skip staff will feature a few of your fellow hams in a special column. We hope to give you a further insight into the hams you talk to so often or hear occasionally on the other end of the coax.

KB6LO DON BREMER

Don got his first license in 1966 as WN6GHR, then WVA6GHR as a Technician. Having no equipment to operate Technician Frequencies he let his license expire until the wife suggested that he either get a license or sell the gear and stop talking about radios. Don attended classes and got his General class ticket as WD6GMR in April 1978 then upgraded to Advanced in April 1979 with his present call.

Don enjoys ragchewing on ten and fifteen meter SSB - has been fairly successful at OSCAR Satellite operating on Mode A. Recently gotten into RTTY and enjoys that. Don loves collecting junk and also does fairly well at that, especially old radio gear.

Don't really know much about radio theory, but is trying to learn, so Don says. Other hobbies include water skiing (when there's water), had a country-western band for 9 years and retired from that last Jan. Still likes to get out and sing and play occasionally for fun.

Don works for the PG&E as an equipment operator and has been with that company for 14 years.

He also enjoys home do-it-yourself type projects, including woodworking, cabinet work and such. He hates working on his car, but does it anyway - is basically a homebody, except for Amateur Radio activities.

His wife Jerry has been fantastically supportive of radio activities and writes the check for all his gear. Bless her heart. Hopefully she will have her own ticket one day. Someone else will have to teach her, Don says. There is still one son at home. He is David, age 16 years and couldn't care less about radio. Thinks girls are OK though.

W6DTV HENRY "HANK" DAVIS

In 1930-31 as part of the Boeing School of Aeronautics Hank studied radio with the Pacific Radio School. In 1931 he received the Amateur Class license, Amateur Station license, W6DTV, and the Second Class telegraphics license. Hank was 18 years of age at this time.

His first QSO was with W7AME using the schools station. He still has that QSL.

In 1932 he joined the Army Amateur Radio System, forerunner of MARS, College in 1932-1936 at Chico State. In 1936 he received the Radio Telephone First Class and went to work for KHSL in Chico as second engineer and Sunday announcer. In 1937 he subbed

for a year as radio and electricity teacher. In 1939 he went to Oregon State College for Graduate Study and the next year to Analy Union High School for 32 years. At Analy he started the first class in Radio in Sonoma County Schools.

In 1950 he joined CAP and became Director of Communications with the rank of Major. This required the Second Class Radio telephone license, which he still holds. He helped in Civil Defense for 15 years as Director of Communications. Many field day activities. Hank has worked many states on all bands from 160 to 1296 mhz.

His first receiver was a 24A hot regenerative plus audio, his first transmitter was MOPA-71's from an NC receiver. Loop modulations were first experienced without phone.

During 48 years of Radio, Hank has received Service awards from ARRL, Red Cross and Sonoma Co. and has 30 years plus membership in ARRL.

Your Call Was Music To My Ears



**KB6LO**

R  
C  
C

Owner 3200 Tobin Lane  
Rosa California 95401  
Sonoma County

**W6DTV**

Henry E. Davis  
7822 Washington Ave.  
Sebastopol, California

# PS PUBLIC SERVICE

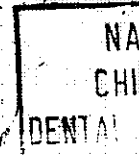
The Christmas message center at K-MART was a lot of fun and very successful. We originated fifty Radiograms to all parts of the U.S. and several military installations. The military traffic was passed Sunday evening by W6CYM, Jim Tomer. All other traffic was sent to W6NL, Sam Van Liew whom you may remember from the Country Fair. Our thanks to you Sam, for the tremendous help. WD6CKP took on message for the Ukiah area. Operators on duty were W6CYM, Jim, KB6LO, Don and Rob Shedore (operator to be). Our special thanks to the management of K-MART, N6AUP for arranging the event, and the employees at K-Mart for their interest and co-operation throughout the day by publicizing the operation as a "BLUE LIGHT SPECIAL".

## PHONE PATCHES

Both N6BLN Lyle and KB6LO were kept busy Christmas handling phone patches for the States, Military personnel overseas and at sea.

S.S. STAFF NOTE: Please keep us advised of your Public Service activities.

SONOMA COUNTY RADIO AMATEURS  
P.O. Box 116  
Santa Rosa, CA 95472



*Bob Olsten  
3723 Arizona Dr.  
Santa Rosa, Ca. 95405*

POSTMASTER: If not deliverable DO NOT RETURN